

## Interwoven® WorkRoute® MP

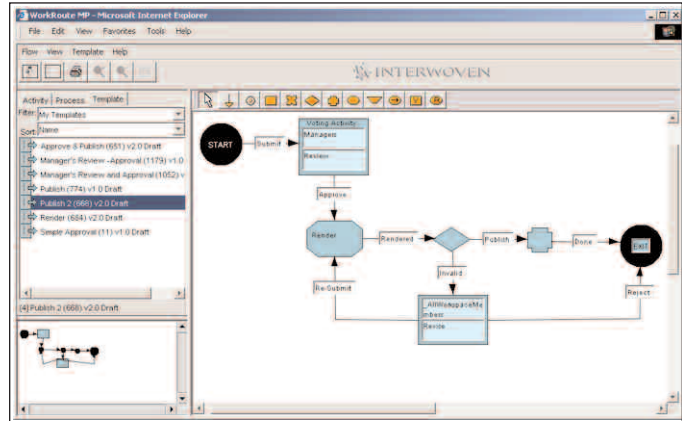
### Automate and Streamline Business Processes

Across industries, the drumbeat of productivity improvement requires companies to do more with less. Organizations are looking to streamline operations, accomplish the same objectives with fewer people, and save costs wherever possible. At the same time, increasingly strict regulatory and compliance initiatives demand that organizations perform activities in a consistent and auditable manner. To this end, business process automation can help ensure that processes are executed efficiently, consistently, and in accordance with regulations, legislation, and best practices.

Everyday, businesses realize tremendous cost savings and efficiency gains by deploying workflow and business process automation technologies. Interwoven's WorkRoute MP provides comprehensive business process automation functionality designed to minimize the number of manual and error-prone activities that employees and partners must engage in as they complete their work. WorkRoute MP helps users to model and consistently execute complex business processes and remove inefficiencies and bottlenecks, ultimately enabling more timely and informed decisions, more consistent corporate performance, and lower operating costs.

### Automate Complex Content-Based Business Processes

WorkRoute MP enables organizations to map, automate, and ensure consistent execution of, business activities such as approving contracts, submitting evidence for compliance, preparing deal books, scanning and imaging paper documents, processing claims, and tracking issues. The application's escalation and exception-handling features can dramatically improve the "time to closure" of any process, even when employees are distributed or ad hoc participants. Further, its open architecture allows processes in WorkRoute MP to link and integrate with external systems such as data-intensive back end applications. Built on the same server architecture as all other WorkSite MP applications, it provides users with consistent look and feel, a common security model, and user management interface. WorkRoute



**Graphical workflow builder**

MP also leverages the extranet capabilities of the WorkSite MP Server to allow workflows to be extended to customers, suppliers, and partners where high value collaboration occurs. Interwoven provides two process automation options. WorkSite MP includes an integrated document routing and approval capability that is powerful, yet easy to use for ad hoc workflow. WorkRoute MP extends the basic document routing functionality with a full-featured business process automation engine that enables sophisticated business process management to handle complex document review processes, branching, voting, system-to-system communication, and many other requirements. With WorkSite MP's workflow solutions, organizations can choose the appropriate level of functionality needed to solve their unique business challenges.

### Key Features of WorkRoute MP

- **Graphical Process Designer**  
Business analysts can drag, drop, and connect various process steps — such as activity, conditional, and delay — to create a visual map of their business process. Users can assign each step to specific users or groups, define data to be collected and associate one or more forms, all using an Internet-based interface for rapid application development.
- **Process Reuse**  
A process map can be reused inside one or more other process maps. Common activities — such as approval series — can be created once and deployed across multiple workflows to leverage best practices and eliminate redundant work.

- **Workflow Visibility**  
Users keep track of their workflows through personal inboxes, automated e-mail notifications, and watch lists, ensuring maximum visibility into commitments to prevent any details from falling through the cracks.
- **Role-based Assignments**  
Each workflow step can be assigned to a user, or, more commonly, to a workspace role or workgroup. With role-based step assignment, the same process deployed in a second workspace may assign the same task to a defined role, yet may have different users assigned to that role. This ensures effective project execution with minimal rework and administration.
- **Conditional Branching**  
Rules are defined based on data comparison or complex scripting to drive workflows through multiple paths, emulating the way compound decisions are made in real-life. This decision-making capability enables common rule-driven decisions to be made more quickly and consistently.
- **Time Delays**  
Delays can be set to trigger an event or execute the next process step at a preset deadline, when a certain amount of time has elapsed, or periodically to prevent costly delays.
- **Deadline and Exception Handling**  
When a deadline is missed, process owners are notified and content can be rerouted to a manager to keep projects moving forward on time.
- **Integration with Other Systems**  
Each process step can invoke custom scripting (either JavaScript or Java) to transact workflow data with enterprise systems, thereby leveraging information or providing integration into those systems.
- **Open Standards-based Forms**  
The WorkRoute MP forms designer provides the ability to easily create customized forms for data capture for each step of a workflow process. A business analyst can design any customized form by using the wizard-driven forms designer. This form is then used to capture data from end users as they interact with the business process at any step in the workflow. Forms can have a variety of elements including: combo boxes, text boxes, metadata picker, or WorkSite MP users/groups picker. In addition, users can embed JavaScripts within these forms to further customize business logic if needed.

## The Interwoven Advantage – WorkRoute MP

WorkRoute MP enables any organization to build upon the team-based collaboration and document routing capabilities of the WorkSite MP suite to support even the most complex business processes. Its business process management functionality enhances productivity for faster response to business needs and better adherence to internal guidelines and regulatory requirements. The robust feature set combined with rapid deployment capabilities and flexible design make WorkRoute MP the ideal choice for one department or an entire global enterprise.

## About Interwoven WorkSite MP

The WorkSite MP suite is the industry's only collaborative document management platform developed from the ground up in 100% Java, offering customers flexibility and open standards support. It is also J2EE compliant, enabling customers to leverage existing infrastructure investments by delivering consistent performance across a range of operating systems. It offers an unsurpassed combination of comprehensive features, standards-based architecture, scalable performance, and ease of customization and use. The unique Interwoven multi-tier architecture enables it to scale from supporting one department to meeting the needs of the most demanding multinational enterprise. The entire WorkSite MP suite delivers the fastest time to deployment, lowest total cost of ownership, and highest customer satisfaction ratings in the industry.

For information on supported platforms and system requirements, please download the datasheet at:  
[http://www.interwoven.com/documents/solutionbriefs/sb\\_wsmpsp.pdf](http://www.interwoven.com/documents/solutionbriefs/sb_wsmpsp.pdf)

**Interwoven, Inc.**  
803 11th Avenue  
Sunnyvale, CA 94089 USA  
(408) 774-2000  
[www.interwoven.com](http://www.interwoven.com)

Interwoven, TeamSite, Content Networks, OpenDeploy, MetaTagger, DataDeploy, DeskSite, iManage, FileSite, MediaBin, MetaCode, MetaFinder, MetaSource, OpenTransform, Primera, TeamPortal, TeamXML, TeamXpress, VisualAnnotate, WorkKnowledge, WorkSite, WorkDocs, WorkPortal, WorkRoute, WorkTeam, Microsoft Outlook is the registered trademark of Microsoft, Corp., the respective taglines, logos and service marks are trademarks of Interwoven, Inc., which may be registered in certain jurisdictions. All other trademarks are owned by their respective owners. Copyright 1996-2005 Interwoven, Inc. All rights reserved. sbmpwr\_3- August 2004.