

Interwoven® WorkSite MP Server

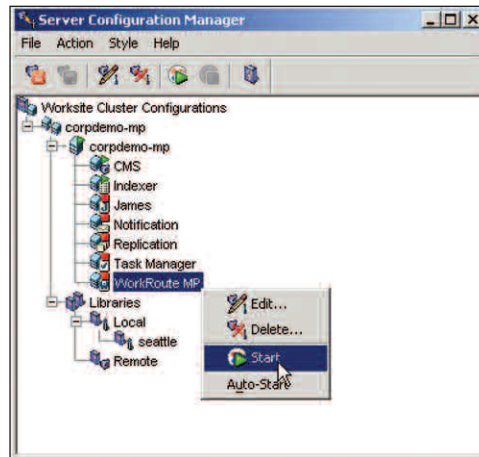
Enterprise-Class Collaborative Document Management

WorkSite MP, Interwoven's Collaborative Document Management (CDM) platform, delivers platform independence, scalability, and reliability to help companies drive their cost-saving, productivity improvement, and compliance initiatives. Unlike legacy system architectures, WorkSite MP offers fully integrated document management, collaboration, and extranet security to drive rapid adoption both within and beyond traditional corporate boundaries. Worksite MP offers full lifecycle management of documents, ranging from creation and capture, collaborative review and approval, all the way through to publishing, records management, and archival. Because WorkSite MP is built on a J2EE architecture and offers multiple SDKs — Java, .Net, COM, and Web Services — organizations get a platform-agnostic solution that provides secure and cost-effective central management of critical business content.

Interwoven WorkSite MP Server Offers Scalability, Extensibility, and Security

With its robust multi-platform architecture, WorkSite MP Server offers a rich set of collaborative document management features that enable the extended enterprise to securely create, capture, review, and distribute critical business information. WorkSite MP is the only product that offers document management, collaboration, and workflow in a single integrated server. Server performance is optimized to handle large volumes of content across multiple geographic locations — offering low latency for end-users while conserving network bandwidth. WorkSite MP supports a delegated administration model that allows business analysts, rather than IT resources, to administer and configure the system to meet their needs.

A flexible, distributed, multi-tier architecture separates the data, business logic, and presentation layers to enable rapid customization and application extension. Plus, the delegated administration model distributes appropriate controls across IT administrators, business process owners, and end-users. This model ensures rapid response to business needs, without sacrificing necessary security and oversight. The data model can be easily extended, using a wizard-driven tool, by any business analyst. The business logic layer is completely encapsulated in a set of APIs. Developers can access



WorkSite MP Server Configuration

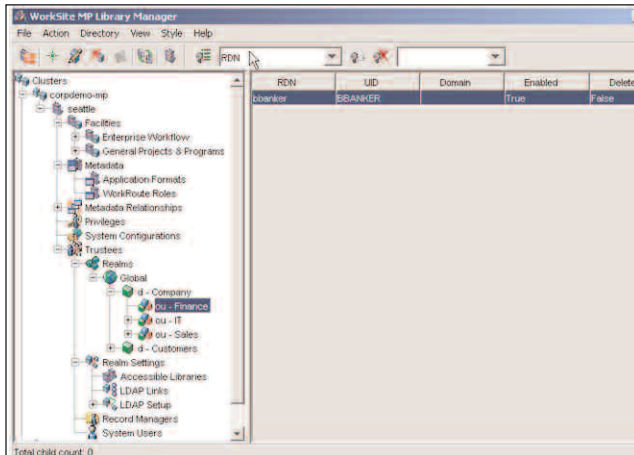
this layer through the WorkSite MP Software Development Toolkit (SDK) available in Java, COM, .NET, and Web Services versions. The presentation layer — composed of JSP — is not only flexible, but can be customized at the department or business unit level. However, WorkSite MP Server's multi-tenant support goes beyond just look-and-feel customization. Containment and a rules-driven security model ensure content, and even user information, remain isolated. Combined with the customization capabilities, WorkSite MP Server enables teams, business units, or divisions to have a truly unique user experience, while minimizing cost of ownership and significantly limiting the likelihood of security breaches.

Key Features of WorkSite MP Server

- **Support for Multiple Platforms**
Pure Java-based architecture supports a wide array of environments including Windows, Linux, AIX, and Solaris, ensuring organizations can leverage existing investments in a heterogeneous infrastructure.
- **Scalable Performance**
Scales to handle millions of documents, hundreds of thousands of workspaces or projects, and tens of thousands of geographically distributed users. Server-to-server proxy and intelligent caching provides fast access and conserves network bandwidth, minimizing user wait time while reducing IT costs.
- **Multi-Tenant Support**
Whether supporting multiple companies or multiple departments in the same company, administrators can logically segregate content, users, and customizations into facilities. Multiple facilities can exist in a single product instance, avoiding the overhead of replicated hardware, software, and administration, thereby reducing costs.

- **Scalable/Delegated Administration**

By distributing administration across three fundamentally different layers of users — administrators, business process owners, and end users — the WorkSite MP Server eliminates bottlenecks and ensures enterprise-wide adoption of WorkSite MP.



Resources Manager

- **Designed for Redundancy**

Each layer of the architecture can be clustered to ensure failover redundancy for maximum reliability and business continuity.

- **Federated Repositories**

Worksite MP Servers can be installed at different geographic locations. Servers can be configured to provide a unified global repository view to end-users to provide single-point access to enterprise-wide business content stored in geographically-distributed data stores. WorkSite MP offers sophisticated file cache management for caching remote files locally to optimize network bandwidth utilization, thus improving user experience.

- **Extendable Metadata**

Additional data fields can be added to any object, including documents, workspaces, and collaborative items — using a simple wizard-driven tool. Fields can be single or multi-valued and have parent-child relationships. The extendable metadata model enables implementers to tailor the product for users' immediate needs, and to evolve with their needs overtime.

- **Robust User Management**

Manages trustees, organizational units, and groups in an LDAP-like user hierarchy. Offers tight integration with corporate directory services (LDAP, ADS, etc.) and provides tools for auto synchronization — not just a one-time import — minimizing the effort to maintain user information.

- **PDF Conversion**

User is able to get a PDF rendition from various document formats including MS Word, Excel, and PowerPoint. No desktop software is needed to convert documents to PDF format; rather, the conversion and caching happens at the WorkSite MP Server, to improve user experience and system administration.

- **Market-Leading Security**

Protects sensitive data by controlling access to system functionality and content at the object level. Utilizes security policies to streamline security management without sacrificing integrity in highly collaborative environments.

- **Full-Text Indexing**

Provides extremely powerful search capability across all objects in the repository, based on context, metadata, and full-text indexes. Search forms and results can be customized to enable business users to rapidly locate critical information.

- **Notification Engine**

Notifies users when certain events occur within the system (e.g. a document is checked in). These notifications can also be received through a standard e-mail system to keep projects moving forward.

WorkSite MP Software Development Kit (SDK)—Rapid Application Development and Deployment

The Interwoven WorkSite MP SDK is a comprehensive set of tools and APIs that expose the capabilities of the WorkSite MP Server. The SDK consists of sample programs and the WorkSite Object Model (WOM) API, which programmers can utilize to extend out-of-the-box Interwoven applications, create connectors, manipulate objects during workflows, or create completely new applications. The entire API is exposed through a set of Java Classes, COM, .NET, as well as Web Services. By supporting these most prevalent and best understood programming environments, Interwoven ensures a shorter learning curve and maximum utilization of the Interwoven services. Developers working with Interwoven products are assured that the APIs fueling their applications are rich, quality tested, and fully supported. For these reasons, WorkSite MP SDKs provide developers a safe environment for rapid customization at a low cost of implementation and maintenance.

The Interwoven Advantage: WorkSite MP Server

The WorkSite MP Server is designed from the ground up to deliver the industry's best performance across platforms and geographies, all at a low cost of ownership throughout its lifecycle. WorkSite MP is available in two configurations — Workgroup and Corporate editions — to meet the needs of different market segments. The industry-leading collaborative document management infrastructure, Interwoven's WorkSite MP enables enterprises of any size to better manage their corporate information, streamline their business processes, and improve the oversight and compliance initiatives that exist within their organization.

For information on supported platforms and system requirements, please download the datasheet at: http://www.interwoven.com/documents/solutionbriefs/sb_wsmpsp.pdf

Interwoven, Inc.
803 11th Avenue
Sunnyvale, CA 94089 USA
(408) 774-2000
www.interwoven.com

Interwoven, TeamSite, Content Networks, OpenDeploy, MetaTagger, DataDeploy, DeskSite, iManage, FileSite, MediaBin, MetaCode, MetaFinder, MetaSource, OpenTransform, Primera, TeamPortal, TeamXML, TeamXpress, VisualAnnotate, WorkKnowledge, WorkSite, WorkDocs, WorkPortal, WorkRoute, WorkTeam, Microsoft Outlook is the registered trademark of Microsoft, Corp., the respective taglines, logos and service marks are trademarks of Interwoven, Inc., which may be registered in certain jurisdictions. All other trademarks are owned by their respective owners. Copyright 1996-2005 Interwoven, Inc. All rights reserved. sbmpws_4—August 2004.