

## Data Sheet

### Interwoven® WorkSite MP

#### Overview

Today's economic world of mergers, acquisitions, globalization, and expansion means that projects are no longer completed within one office, but rather by teams of users that are distributed across offices, corporate boundaries and time zones. To achieve the greatest possible productivity from globally distributed teams, these enterprises require a collaborative environment that allows critical business content to be managed, shared and collaborated on in a secure and cost-effective manner across the organization.

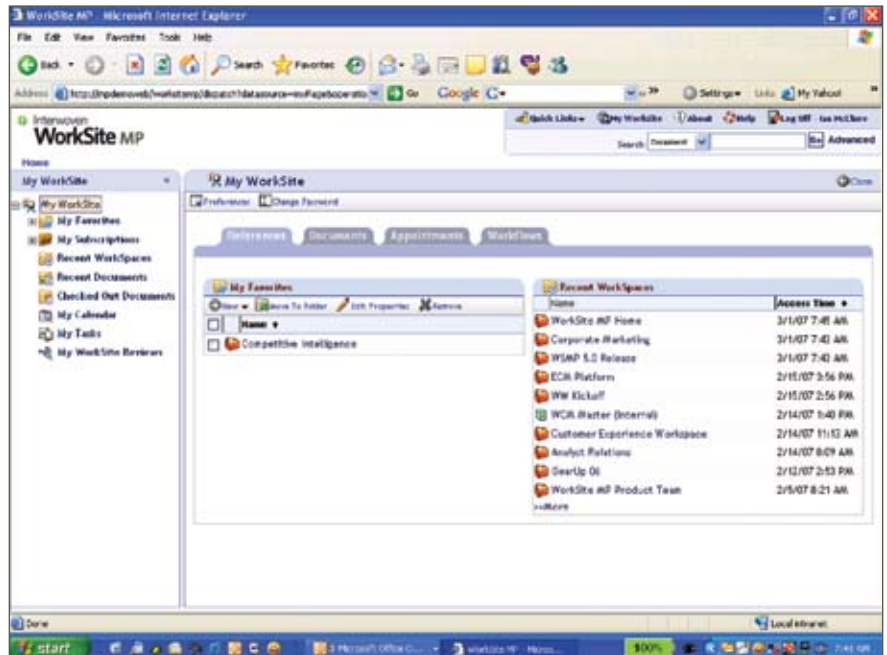
#### Accelerate Collaboration and Business Processes

Interwoven WorkSite MP provides enterprise organizations with a single solution for document management and collaboration—even across distributed organizational boundaries. Project teams, departments or enterprises can rely on WorkSite MP to version and secure content of various types while supporting collaboration between even remote or external team members.

WorkSite MP provides the means to automate processes, adhere to corporate compliance guidelines, and reduce the time and money invested in managing content and processes.

With client integrations to common business applications such as Microsoft Office, Microsoft Outlook, IBM Lotus Notes, and Adobe Acrobat, it is easy for project teams to learn and incorporate WorkSite MP into their day-to-day tasks, easing adoption and compliance with corporate best practice policies.

The WorkSite MP Workspace gives project teams a shared environment in which the business content and project collaboration can happen within the same context so team members can track updates, milestones, and communications. Project progress is



The WorkSite MP Workspace centralizes all activities for improved productivity and ease of use.

accelerated by the shared context and the automated notifications which simplify the hand off of work between team members.

While advanced search options make it easy for business users to find content across WorkSpaces, access to sensitive data is controlled by Workspace membership and flexible security policies.

Interwoven WorkSite MP is a key component of the Interwoven Collaborative Document Management solution to facilitate team-based collaboration on document-intensive processes, including new product launch, proposal and contract development, and corporate legal matters. It also provides general project management, to improve organizational decision-making and streamline execution.



Interwoven WorkSite MP provides collaboration and document management for distributed teams.

## Content Drives Business

WorkSite MP is a core component of the Interwoven Collaborative Document Management Solution that helps organizations improve their collaborative processes and unlock the value of content within the context of business applications across the enterprise.

### Product Architecture

WorkSite MP is a J2EE multi-tier client-server software package built on open standards to allow for distributed clustering and horizontal scaling. A published SDK provides documentation of all APIs available in WorkSite MP and provides support for JAVA, .NET, and Com integration. The multi-tiered architecture of WorkSite MP provides a services-oriented approach that enables WorkSite MP to support configurations, customizations and interoperability with 3rd party systems.

### Supported Platforms

WorkSite MP is available for popular Windows®, Solaris, and Linux server platforms. The WorkSite MP business user clients support complete integration with Microsoft Office, Microsoft Outlook, IBM Lotus Notes, and Adobe Acrobat while the WorkSite MP Web Components client provides browser-based access to all document management and collaboration capabilities.

### System Requirements

A system running WorkSite MP should have at least 1 GB of RAM. WorkSite MP requires approximately 200 MB of disk space, depending upon the configuration. Please refer to the WorkSite MP Supported Platforms list, WorkSite MP Server Installation Guide, and the WorkSite MP Best Practices Guide for specific requirements and configuration recommendations.

### Summary

Interwoven WorkSite MP is a feature-rich and flexible collaborative document management offering based on award-winning technology. It enables project teams, departments, and enterprises to collaborate securely, across organizational

Interwoven, Inc.  
803 11th Avenue  
Sunnyvale, CA 94089 USA  
(408) 774-2000

### Key Features

Key feature	What it does
Collaboration and Knowledge Spaces	WorkSite MP provides Collaboration Spaces—for team projects, and Knowledge Spaces—for business users to access content assets.
Robust User Management and Security	Manages users, organizations, and groups in an LDAP-like user hierarchy that can integrate with corporate directory services.
Delegated Administration	Distributes administration across users and appropriate resources to eliminate project delays, and ensure enterprise-wide adoption.
Distributed Repositories	Stores and secures content and supports distributed team access through remote libraries and distributed server clusters.
Extensible Metadata	Incorporates custom data fields so existing business processes can be modeled and supported.
Advanced Searching	Queries the document repository based on full-text or metadata profile values to quickly and easily retrieve search results.
Integrated Client Interfaces	Reduces training time and drives adoption with client integrations to Outlook, Notes, Office, and Acrobat
WorkSite MP Kofax Ascent Capture Integration	Imports business documents for sophisticated, end-to-end scanning processes.
WorkSite MP Media Add-on*	Manage media within a Workspace and view digital assets in a gallery view.
WorkSite MP PDF Server*	Automatically generate and store PDF versions of content so business users can access necessary data assets.
WorkSite MP WorkRoute*	Integrates disparate systems and automate repeatable processes to increase productivity and decrease costs.

\* Licensed add-on

boundaries, to plan, develop and execute enterprise transactions, projects and delivery of products and services. WorkSite MP has been adopted by top companies worldwide to improve core business processes and results in initiatives ranging from deal management and new product launches to corporate legal and general project management.

### Interwoven is a global leader in content management solutions

Interwoven's software and services enable organizations to effectively leverage content to drive business growth by improving the customer experience, increasing collaboration, and streamlining business processes in dynamic environments.

Our unique approach combines user-friendly simplicity with robust IT performance and scalability to unlock the value of content.

Today, nearly 3,800 enterprise and professional services organizations worldwide have chosen Interwoven, including: adidas, Airbus, Avaya, Cisco, DLA Piper, the Federal Reserve Bank, FedEx, HSBC, LexisNexis, Microsoft, Samsung, Shell, Samsonite, White & Case, and Yamaha. Over 19,000 developers and over 300 partners enrich and extend Interwoven's offerings. To learn more about Interwoven, please visit [www.interwoven.com](http://www.interwoven.com).