

Interwoven® WorkRoute™ MP

Streamline and Automate Complex Business Processes

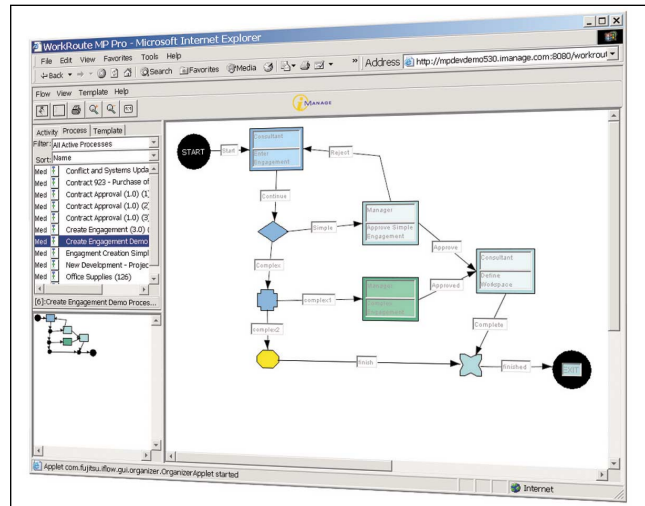
Interwoven WorkRoute MP provides comprehensive business process automation, minimizing the need for manual tracking and management. It helps users to model and consistently execute complex business processes and identify inefficiencies and bottlenecks. It also captures a record of each event for accountability and compliance. Ultimately, WorkRoute MP enables more timely and informed decisions, more consistent corporate performance and lower operating costs.

Business Realities Call for Process Automation

For employees across industries, today's universal business challenge is doing more with less. Organizations are looking to streamline operations, accomplish the same objectives with fewer people and save costs everywhere possible. At the same time, increasingly strict regulatory and compliance initiatives demand that organizations implement and then certify that they are performing specific processes in a consistent manner. To this end, automation can help ensure that processes are executed efficiently, consistently and in compliance with regulations.

Interwoven WorkRoute MP—Automate Complex Content-Based Business Processes

WorkRoute MP enables organizations to map, automate and ensure consistent execution of complex business activities such as approving contracts, submitting evidence for compliance, preparing multi-faceted deal books, processing claims and tracking issues. The application's escalation and exception handling features can drive a process to closure, even when employees are absent or forgetful. And, its open architecture allows processes in WorkRoute MP to link and integrate with external systems such as data-intensive back-end applications. Built on the same server architecture as all other WorkSite™ MP applications, it provides users with consistent look and feel and a common security and user management interface. WorkRoute MP also leverages the extranet capabilities of the WorkSite MP Server to allow workflows to be extended to customers, suppliers and partners where high value collaboration occurs.



View and take action on all relevant content in the right context—directly from your portal page.

Two Workflow Options for Varying Business Automation Requirements

Interwoven provides two process automation options. WorkDocs® MP includes an integrated document routing and approval capability that is powerful, yet easy to use for ad-hoc workflow. WorkRoute MP extends the basic WorkDocs functionality with a full-featured workflow application that enables sophisticated business process management. An organization can deploy either or both as the situation demands.

Key Features of WorkRoute MP

- **Graphical Process Designer**
Business analysts can drag, drop and connect various process steps—such as activity, conditional and delay—to create a map of their business process. Users can assign each step to specific users or groups, define data to be collected and associate one or more forms, all using an Internet based interface for rapid application development.
- **Process Re-use**
A process map can be re-used inside one or more other process maps. Common activities—such as approval series—can be created once and deployed across multiple processes to leverage best practices and eliminate redundant work.

- **Workflow Visibility**
Users keep track of their workflows through personal inboxes, automated e-mail notifications and watch lists, ensuring maximum visibility into commitments to prevent any details from falling through the cracks.
- **Role-based Assignments**
Each workflow step can be assigned to a user, or more commonly, to a Workspace role or work group. With role-based step assignment, the same process deployed in a second Workspace may assign the same user playing a different role a different set of role-appropriate steps to ensure effective project execution with minimal rework and administration.
- **Conditional Branching**
Rules are defined based on data comparisons or complex scripting to drive workflows through multiple paths, emulating the way compound decisions are made in real-life. This decision-making capability enables common rule-driven decisions to be made more quickly and consistently.
- **Time Delays**
Delays can be set to trigger an event or execute the next process step at a pre-set deadline, when a certain amount of time has elapsed or periodically to prevent costly delays.
- **Deadline and Exception Handling**
When a deadline is missed, process owners are notified and content can be re-routed to a manager to keep projects moving forward on time.
- **Integration with Other Systems**
Each process step can invoke custom scripting (either JavaScript or Java) to transact workflow data with enterprise systems, thereby leveraging information or providing integration into those systems.
- **Open Standards-based Forms**
Implementers can customize forms to capture data from users during any process step. Because the forms are written in simple HTML and Javascript, implementers can utilize their favorite editors, reducing deployment cycles and learning curves.

The Interwoven Advantage— WorkRoute MP

WorkRoute MP enables any organization to build on the team-based collaboration and document routing capabilities of the WorkSite™ MP suite to support even the most complex business processes. Its business process management functionality enhances productivity for faster response to business needs and better adherence to internal guidelines and regulatory requirements. And like the entire WorkSite Suite, its robust feature set combined with rapid deployment capabilities, ease-of-use and scalable, flexible design makes it the ideal choice for one department or an entire global enterprise.

About iManage WorkSite MP

The WorkSite MP suite is the industry's only collaborative document management platform developed from the ground up in 100% Java, offering customers the flexibility that open standards support. It is also J2EE compliant, enabling customers to leverage existing infrastructure investments by delivering consistent performance across Windows, Linux and Solaris-based systems. It offers an unsurpassed combination of comprehensive features, standards-based architecture, scalable performance and ease of customization and use. And the unique Interwoven multi-tier architecture enables it to scale from supporting one department to meeting the needs of the most demanding multinational enterprise. The entire WorkSite MP suite delivers the fastest time to deployment, lowest total cost of ownership and highest customer satisfaction ratings in the industry.

System requirements

Interwoven Worksite*

Internet Explorer 5.x, 6.x or Netscape 4.7
Microsoft® Windows® 95, 98, Millennium,
NT® 4.0, 2000 or XP

*Requires additional license of Metastorm e-Work

Client Platforms

Microsoft Windows® 2000 (SP1 and above)
Microsoft Windows XP

Browser Support

Windows: IE 5.5 (SP2 and above)

Plug-In Support

Microsoft Office 2000 (SP2)
Microsoft Office XP (SP2)
Microsoft Outlook 2002 (SP2)
Microsoft Outlook XP (SP2)
Lotus Notes R4.6, R5

Server Platforms

Microsoft Windows 2000
Sun Solaris 8
Red Hat Linux

Application Server Platforms

BEA WebLogic 7.X
IBM WebSphere 5.X
Oracle 9i AS 9.0.3
Tomcat (open source) 3.3.a, 4.0

Database Platforms

Oracle 8.1.7 Enterprise Edition
Oracle 9
Microsoft SQL Server 2000

Hard Disk Requirements (recommended)

256 MB minimum required disk space, plus
minimum 200 MB disk space

Interwoven, Inc.
803 11th Avenue
Sunnyvale, CA 94089 USA
(408) 774-2000

Interwoven, TeamSite, MetaTagger, MediaBin, OpenDeploy, the taglines, logo and service marks are trademarks of Interwoven, Inc., which may be registered in certain jurisdictions. All other trademarks are owned by their respective owners. Copyright 1996-2003 Interwoven, Inc. All rights reserved. DSmpwr_1—November 2003.